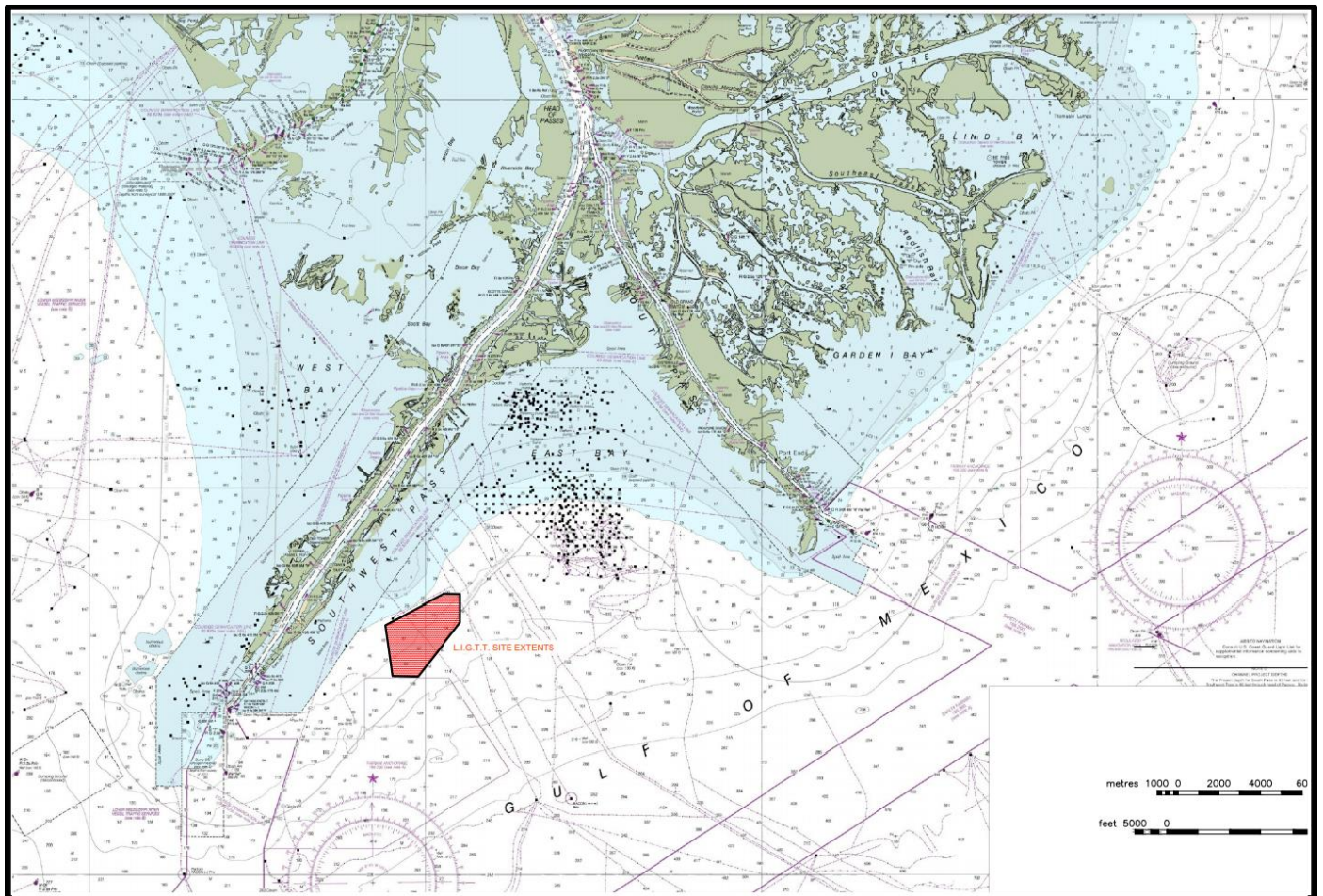


# Louisiana International Gulf Transfer Terminal (LIGTT)

## Project Location

The Louisiana International Gulf Transfer Terminal (LIGTT) is located approximately 2.5 miles off the east shore of Southwest Pass in Plaquemines Parish, Louisiana. The parcel of state water bottom within which this facility is proposed borders federal waters and is shown below.



Louisiana International Gulf Transfer Terminal

